



# MOBILAIR® M13/M17

Portable Compressors

With the world-renowned SIGMA PROFILE ⚙️

Flow rate 0.75 to 1.60 m<sup>3</sup>/min (27 – 57 cfm)

# MOBILAIR® M13/M17

## Compact design with impressive performance

Heavyweight compressed air performance doesn't necessarily have to come with the inconvenience of large size and high operational weight. KAESER's space-saving M 13 and M 17 MOBILAIR models are perfect examples of this and offer multiple advantages: exceptionally compact and lightweight, they provide up to 1.3 or 1.6 m<sup>3</sup> of quality compressed air per minute (at 7 bar) respectively. Moreover, in order to cover as wide a range of needs as possible, the M 13 is offered as a standard petrol model or as an electric-drive version.

## Exceptionally versatile

These smallest compressors in the MOBILAIR range assure incredible versatility for a wide range of applications. Suitable for use in ambient temperatures up to +40°C, they deliver the energy required to power breakers, air spades, pneumatic drills, saws, wrenches, grinders, impact moles and pipe inspection robots. The 15-bar version is the ideal choice for trenchless laying of fibre-optic cables or for leakage tests. An external compressed air aftercooler can also be optionally connected to ensure a dependable supply of cool, condensate-free air at all times. If technically oil-free compressed air is required, an external filter combination can also be connected.

## Petrol or electric drive option

At the heart of every system lies a powerful KAESER rotary screw airend equipped with energy-efficient SIGMA PROFILE rotors. The compressor is driven by a Honda petrol engine, or a high-performance three-phase electric motor in the case of the M 13E, and a low-maintenance V-belt drive system for effective power transmission. Models are also available in various pressure versions ranging from 7 to 15 bar.

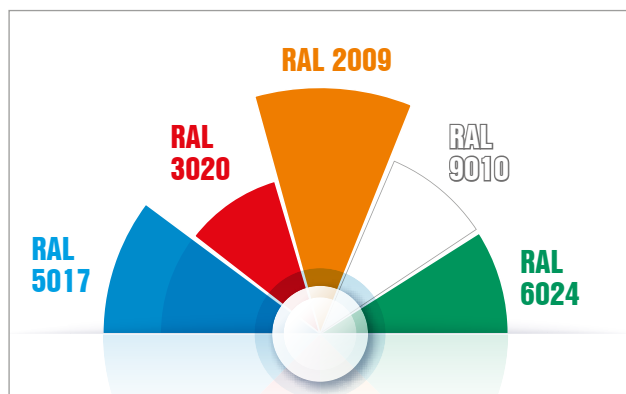
## User-friendly operation

The quality of KAESER's M 13 and M 17 MOBILAIR portable compressors is evident in their user-friendly design. This is assured by:

- An easy-to-read control panel with pressure gauge, operating hour counter and airend temperature monitoring
- Straightforward key start-up and dependable cold-start with choke and electric starter for petrol-engine models
- Single-switch actuation with star-delta start to prevent start-up current surge for electric-drive version. Motor rotation direction monitoring and convenient pole-changing switch

## Made in Germany

The various ranges of MOBILAIR portable compressors are all manufactured at KAESER's headquarters in Coburg, Northern Bavaria. Equipped with the very latest technology, the recently modernised portable compressor plant boasts state-of-the-art equipment, including a TÜV-certified sound testing area for free-field sound level measurement, a facility for high-performance, high-quality powder coating and efficient manufacturing logistics.



## Alternative colours

The corrosion- and scratch-proof, rotomoulded polyethylene enclosure is also available in the following special colours:

- Blue – Equivalent to RAL 5017
- Red – Equivalent to RAL 3020
- Orange – Equivalent to RAL 2009
- White – Equivalent to RAL 9010
- Green – Equivalent to RAL 6024

Other colours are available upon request.

# Compact design with impressive performance



# The M 13 and M 17 in detail



## User-friendliness as standard

No matter which model you choose, every KAESER Mobilair compressor is designed with unrivalled user-friendliness and manoeuvrability in mind and provides optimum component access for ease of maintenance.

## Easy to transport

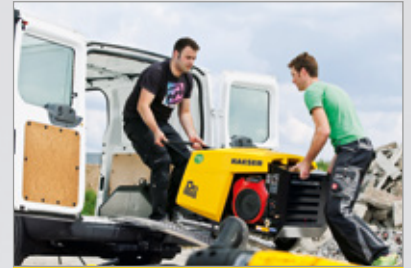
These compact compressors are able to fit into the tightest of loading spaces, which leaves the vehicle towing hitch free for use. A retractable lifting eye makes loading and unloading simple.





### The emissions-free alternative

Instead of a petrol engine, the emissions-free and super-quiet M 13E is equipped with an IP54 ISO F 3-phase motor, making it the perfect choice for use in closed environments and in sound-sensitive areas.



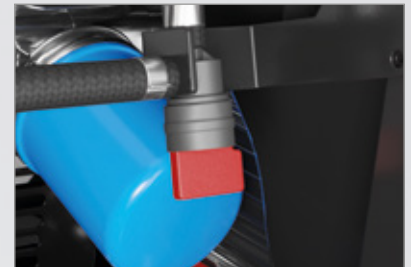
### Easy-load design

The compressor can be manually lifted via four ergonomically designed hand grips to enable easy loading into a van, for example – additional lifting gear is not necessary.



### Outstanding manoeuvrability

Compact design, large pneumatic tyres, a low centre of gravity and a long, stowable tow bar make manoeuvrability simple.



### Petrol shut-off valve

The petrol shut-off valve reliably prevents carburettor overflow. Therefore, petrol does not enter the cylinder during transportation.



### Oil separation with spin-on cartridges

For even faster maintenance, the M 13 and M 17 are equipped with spin-on cartridges on the oil separator tank. This cartridge quick-change capability ensures simple and cost-effective servicing.



### Impressive endurance

The compressors' impressive performance and staying power are made possible thanks to their generously sized fuel tanks and continuous delivery control, which precisely matches air flow to meet actual demand. This further reduces the fuel consumption of these already efficient machines.

# Optional compressed air treatment

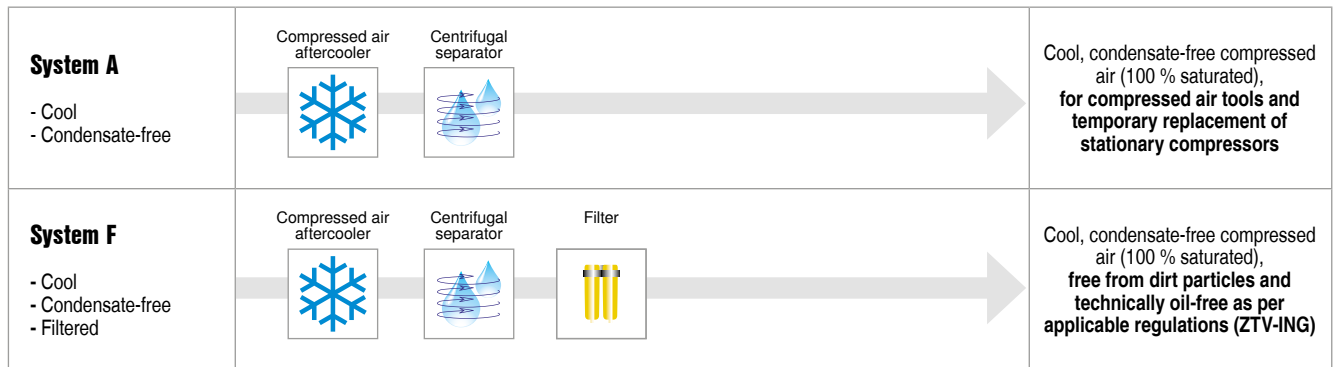
The M 13 and M 17 can be operated with an external compressed air aftercooler and, optionally, with an additional microfilter combination featuring filter bypass capability. Units are delivered ready-prepared ex works with:

- 12-V electrical connection for voltage supply to the aftercooler fan
- Connection for return of separated condensate (in the petrol version, condensate is evaporated via the hot exhaust gases; in the electric version, condensate is collected via an integrated tank)

Both support frames are equipped with fixed connections for compressed air, fan power supply and condensate return. All you need to do is connect the suitably equipped compressor.



# Compressed air treatment variants



# Technical specifications

## Petrol versions

Model	Compressor				Petrol engine				Complete system				
	Flow rate		Working pressure		Make	Model	Rated engine power	Speed at full load	Fuel tank capacity	Operating weight	Sound power level <sup>1)</sup>	Sound pressure level <sup>2)</sup>	Compressed air outlet <sup>3)</sup>
	m <sup>3</sup> /min	cfm	bar	PSI									
M 13	1.30	46	7	100	Honda	GX 630	15.5	2500	20	202	≤97	76	1 × G½
	1.00	35	10	145									
	0.85	30	13	190									
M 17	1.6	57	7	100	Honda	GX 630	15.5	3300	20	204	Only for export outside the EU		1 × G½
	1.0	35	15	215				2300			≤97	76	

## Electric version


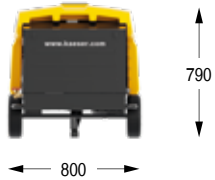

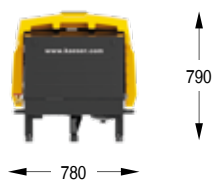
Model	Compressor				Electric motor (3-phase)				Complete system				
	Flow rate		Working pressure		Make	Model	Rated motor power	Voltage variants	Recommended fusing	Operating weight	Sound power level <sup>1)</sup>	Sound pressure level <sup>2)</sup>	Compressed air outlet <sup>3)</sup>
	m <sup>3</sup> /min	cfm	bar	PSI									
M 13E	1.20	42	7	100	ABM	4D112-M-2	7.5	400V 50 Hz 230V 50 Hz 460V 60 Hz	25A	187	≤97	73	1 × G½
	1.00	35	10	145									
	0.90	32	12	175									
	0.85	30	13	190									
	0.75	27	15	215									

<sup>1)</sup> Guaranteed sound power level  $L_{WA}$  as per directive 2000/14/EC

<sup>2)</sup> Surface sound pressure level  $L_{pA}$  as per ISO 3744 (r = 10 m)

<sup>3)</sup> G½" = Connection thread size – Hoses with G¾" claw couplings can be connected

# Dimensions

<b>Portable unit</b>	 <p>1400</p>	 <p>800</p> <p>790</p>
<b>Stationary unit</b>	 <p>1070</p>	 <p>780</p> <p>790</p>

# The world is our home

As one of the world's largest manufacturers of compressors, blowers and compressed air systems, KAESER KOMPRESSOREN is represented throughout the world by a comprehensive network of wholly owned subsidiaries and authorised distribution partners in over 140 countries.

By offering innovative, efficient and reliable products and services, KAESER KOMPRESSOREN's experienced consultants and engineers work in close partnership with customers to enhance their competitive edge and to develop progressive system concepts that continuously push the boundaries of performance and technology. Moreover, decades of knowledge and expertise from this industry-leading systems provider are made available to each and every customer via the KAESER group's advanced global IT network.

These advantages, coupled with KAESER's worldwide service organisation, ensure that every product operates at the peak of its performance at all times, providing optimal efficiency and maximum availability.



## KAESER KOMPRESSOREN SE

P.O. Box 2143 – 96410 Coburg – GERMANY – Tel +49 9561 640-0 – Fax +49 9561 640-130  
E-mail: [productinfo@kaeser.com](mailto:productinfo@kaeser.com) – [www.kaeser.com](http://www.kaeser.com)